
STYLES + THEMES:

native vegetation gives strongest impression of place:

conifers + birches suggest cold places

palms + citrus trees suggest hot places

MEDITERRANEAN

- MOOD
 - warm, dry, fragrant, alfresco lunch
- COLORS
 - pinkish beige, sea foam green, teal blue, terra cotta colors, gray-green foliage, silvery plants,
- PLANTS-bright flowers
 - grape vines, rosemary, olives, sweet bay, salvias, lavender, Italian cypress, bougainvillea, runner beans, herbs, roses, wisteria, catmint, sedums, geraniums, artemisia, bush germander, oregano, rockcress, santolina, thyme, sunflowers, succulents, cactus, shade giving trees
- SMELLS
 - lavender, rosemary, lemon, olives
- HARDSCAPES
 - gravel, terra cotta pots, tile mosaics, fountains, bistro chairs, teak furniture, rustic arbors, courtyards, stone,
- ORNAMENT
 - shells, mirror, wrought iron, terra cotta wall mounted fountain, statuary, wall pots, concrete trough, bridges, tatami mats, lantern, raked stones into circles to suggest water, buddha statues,



ASIAN-CHINESE/JAPANESE

- MOOD
 - evokes natural world, contemplation, simplicity,
- COLORS
 - all shades green, white, brown
- PLANTS
 - tailored green shrubs, lacy japanese trees, moss, flowering plum/cherry, magnolia, pine, azaleas, rhododendrons, camellias, boxwoods, ferns, star magnolia, yew pine, mondo grass, ginkgo, bamboo, mosses, ferns,
- SMELLS
- HARDSCAPES
 - water, ponds, fountains, gravel, bamboo fences, stepping stones, pebbles, bronze, statues
- ORNAMENT
 - stones, boulders,
- DESIGNERS:
 - Ted Smyth



NATURAL/WILDLIFE GARDENS

- more of a conviction than style, no herbicides, , encourage wildlife, protect environment, designing with plants that mimic assoc +styles in nature
- grow plants in swathes, entwining,
- wetland plants,butterfly + pollinator plants, natives,
- MOOD
 - woody, calm, alive with nature, messy,
- COLORS
- PLANTS
 - native plants, berries, fruit trees, wildflowers, ornamental grasses, daisies, batchelor buttons, crocus, snowdrops, butterfly weed, columbine, yarrow, coneflower, juniper, oak, hawthorn, dogwood, goldenrod, crabapple, coreopsis, flower meadows, pollinators,
- SMELLS
- HARDSCAPES
 - rustic fences, boulders, water, benches, logs, tree stumps, tree house, natural paths, ponds.
- ORNAMENT
 - bird houses, hummingbird feeders, bee skeps, insect houses, colorful garden art, mobiles, chimes,



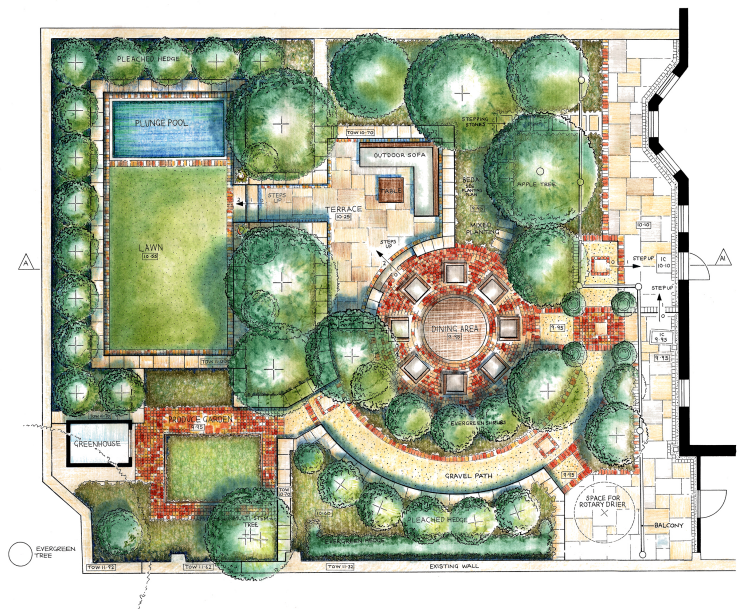
- URBAN FARM/SELF-SUFFICIENT

- MOOD-
 - growing your own food, organically, raising chickens/other livestock,
- COLORS
 - silver, red, yellow, brown,
- PLANTS—vegetables, fruits,
- SMELLS
- HARDSCAPES
 - galvanized wash tubs, wheel barrel, galvanized beds, hog wire, wooden raised beds,
- ORNAMENT
 - horse troughs, galvanized metal, cast iron tubs, metal, farm tools, weathervane, wagon wheels, augers, old screen door, chicken decor, old tools, metal milk jugs, red/white ticking fabric, glass canning jars solar lights, tin funnel lamp, feed bags as pillows, egg baskets, chicken coops,
- DESIGNERS:
 - Roselind Creasy,



NEW FORMAL-GEOMETRIC/FORMAL/SYMMETRICAL

- MOOD
 - modern, fresh, vibrant, colorful, sleek, drama, low maintenance, formal reserved, good quality, high class, ingrained sense of grandeur, balance, structure
- COLORS
 - bright, strong, silver, orange, cobalt blue
- PLANTS
 - clipped boxwood, ornamental grasses, plants set in rows or grid, parterre, formal lawn, castor bean
- SMELLS
- HARDSCAPES
 - linear beds, bold path patterns, strong lines, repetition of elements, contemporary materials, checkerboard space, wooden decks, strong ground pattern, pillars,
- ORNAMENT
 - balls, squares, sculpture, glass pebbles, murals,
- DESIGNERS KNOWN FOR THIS STYLE:
 - Arabella Lennox Boyd, Helen Dillon, Sir Roy Strong





FUNKY +/-OR SURREAL

- MOOD
 - personal voice, whimsy, creativity, experimentation, sentimental objects, architectural salvage, break the rules
- COLORS
 - personal choice, bright colors
- PLANTS
 - lots of different plants, many textures, heights, sedums, cactus, albums. primroses, ajuga, creeping jenny, daisies, roses, sedge, hostas, banana plants
- SMELLS
 -
- HARDSCAPES
 - run gambit from mosaics, to folk art, to bizarre topiary
- ORNAMENT
 - glass, bottle trees, sculpture, recycled materials, shells, metal, mosaics, bowling balls, treehouses, bean teepees, painted tree trunks,
- DESIGNERS:
 - Charles Jencks, Ivan Hicks, Tony Heywood



TROPICAL (FLORIDA LIKE OR BALLINESE LIKE)

- MOOD
 - hot, rain forest, spicy, shady, informal,
- COLORS
 - right green, blue, red, orange, purple, orange, yellow, turquoise,
- PLANTS
 - foliage plants dominate, deep green, purple, red, orange, yellow
 - angel trumpet, banana plant, elephant ears, palms, cactus, sedums, sweet potato vine, bougainvillea, cannas, coleus, vines, ginger, orchids, pineapples, bromeliads, caladiums, impatiens, jasmine, hibiscus
- SMELLS
 - fragrant jasmine,
- HARDSCAPES
 - pools, large pots, porch, colorful tiles, thatched roof structures, waterfalls,
- ORNAMENT
 - wrought iron, teak, cedar, stone,
- DESIGNERS:
 - Raymond Jungles, Will Giles, Maud Wikaya



- COTTAGE + ROMANTIC:

- RIOTOUS MIX OF PERENNIALS, ANNUALS, VEGGIES, CLIPPED HEDGE, FORMAL OR INFORMAL, ARCHTYPICALLY ENGLISH, SHOULD EXUDE MASSES OF ATMOSPHERE
- MOOD
 - vibrant, fragrant, lots wildlife, nostalgic, tumbling over paths, lush softness, highly individualistic + personal, evolving over time—femininity, sumptuousness
- COLORS
 - white, yellow, purple, pink, blue,
- PLANTS—abundant plantings
 - hollyhocks, daisies, roses, foxgloves, sweet peas, old fashioned flowers, veggies, herbs, ladies mantle, yarrow, phlox, lilies, clematis, chamomile, baby's breath, honeysuckle, violas, dianthus, love in a mist, asters, bearded irises, flowering shrubs, solar-coordinated summer bedding plants
- SMELLS
- HARDSCAPES
 - arches, arbors, screen porch, picket fence, post/rail fence, rustic structures, gravel paths, step stones, benches, raised beds, informal curved beds, meandering paths, flowering herbaceous beds, borrowed landscapes,
- ORNAMENT
 - wicker furniture, bistro table, bird feeders, twig trellis, metal gates, sundials, hammock, gazebos,
- DESIGNERS:
 - Gertrude Jekyll,
 - William Robinson, Margery Figg, Beatrix Potter



- **SANCTUARY + SPIRITUAL + HEALING**

- MOOD
 - calm, peaceful, relaxing, privacy, quiets mind, harmonious, outdoor space for quiet contemplation
 - water, fire, air, metal, wood, earth
 - iconic medieval, islamic, japanese zen
- COLORS
 - jade green, browns,
- PLANTS
 -
- SMELLS
 - roses, jasmine, moonflower
- HARDSCAPES
 - fireplace, maze to walk, cast iron tub/shower, screened porch or arbor, water feature, hot tub,
- ORNAMENT
 - candles, sleeping bench/bed, comfortable seats, shelter area, carvings, statues, grottos,
- DESIGNERS:
 - Luciano Giubbilei, Joanna Mowbray, Musee Albert-Kahn



- **MODERN/CONTEMPORARY: MINIMALIST, (TO BE OF THE MOMENT)**

- MOOD—uncluttered, minimal, clean lines, exotic looking plants, thoughtful plants, spatial balance important
- COLORS—bright primary, unusual, rust
- PLANTS—minimal plantings
- SMELLS
- HARDSCAPES—steel, stone, cedar, concrete, glass, baboons,
- ORNAMENT—straight, edged, geometric forms,
- DESIGNERS:



NEW WORLD STYLE:

- MOOD
 - look to warmer continents where people enjoy outdoor way of life (Australia), informal, outdoor rooms, extension of home, native plants, natural design, easy-going
- COLORS
- PLANTS
- SMELLS
- HARDSCAPES
- ORNAMENT
- DESIGNERS:

ARABIC:

- MOOD: sophisticated, restrained use of materials and plants, symmetry, geometry, order and gracefulness
 - look to warmer continents where people enjoy outdoor way of life (Australia), informal, outdoor rooms, extension of home, native plants, natural design, easy-going
- COLORS
- PLANTS: fruit trees, vertical conifers or cypresses, palm trees
- SMELLS
- HARDSCAPES: Stone walls, colored tiles, simplified water features,
- ORNAMENT
- DESIGNERS:

